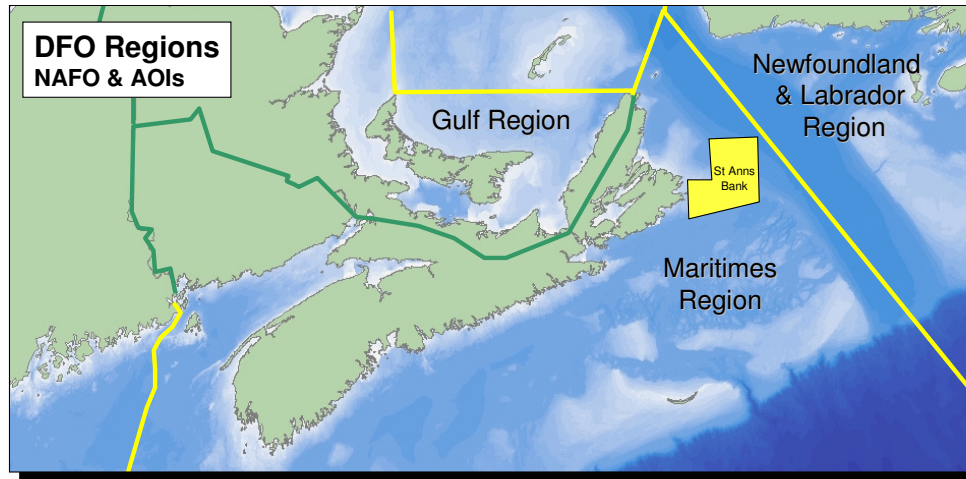




# **SOCIO-ECONOMIC PROFILE**

## **ST ANNS BANK AREA OF INTEREST**



This report is a socio-economic profile of the St Anns Bank (SAB) candidate area of interest (AOI). The report covers all direct socio-economic activities currently identified with the area of interest. As such, landed values used in the report represent only the value of the fishery when landed and do not include additional value-added activities such as processing or transportation. The analysis in no way suggests or implies the potential socio-economic impacts of a Marine Protected Area (MPA) designation on the area. Any impacts of an MPA designation will be dependent on whatever protection measures are implemented for the chosen area.

The St Anns Bank candidate area of interest is located east of Scatarie Island off Cape Breton and is approximately 5,100 km<sup>2</sup> in size. The area includes Scatarie Bank, most of St Anns Bank, and part of the western edge of the Laurentian Channel.

### ***What commercial fisheries currently operate on the St Anns Bank AOI?***

Over the past 7 years, numerous fisheries have been active on the St Anns Bank AOI including groundfish, Herring, Scallops, Sea Urchins, Sharks, Shrimp and Snow Crab.

In 2008, vessels fishing on the St Anns Bank AOI landed in the Maritimes Region and the Gulf Region. Landings were primarily comprised of groundfish and Snow Crab.



***What are the current landed values and landed quantities of the commercial fisheries operating on the St Anns Bank AOI?***

In 2008, the total quantity landed of all species caught on the St Anns Bank AOI was approximately 52 tonnes (t) which translated into a total landed value of approximately \$105,000.

This consisted primarily of groundfish with a total landed value of approximately \$49,000 and the Snow Crab fishery with a total landed value of \$45,000. These two fisheries together accounted for over 89% of the total landed value from the area.

Table 1 Landed Quantity and Landed Value, 2008

Species	Landed Value (\$)	Landed Quantity (Round Kg)
Groundfish	\$48,693	28,730
Snow Crab	\$45,102	10,250
Other	\$11,292	12,561
<b>Total</b>	<b>\$105,087</b>	<b>51,541</b>

Note: Landed values do not include additional value obtained through processing

***How seasonal are the fisheries on the St Anns Bank AOI?***

In 2008, fisheries were active on the St Anns Bank AOI five months of the year with most of the activity occurring in July. The months fished by vessels operating on the St Anns Bank AOI varied substantially by species. Table 2 summarizes months fished and the month reporting the largest landing in 2008.

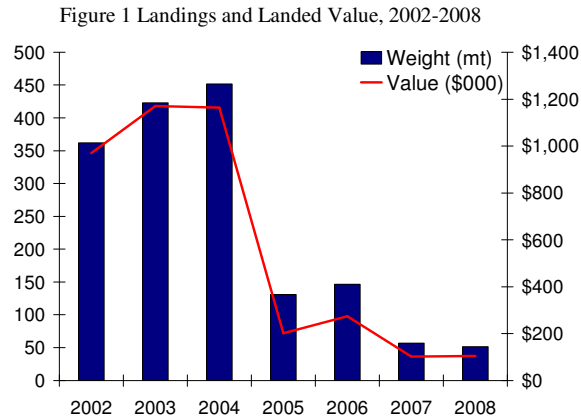
Table 2 Months Fished and Peak Month by Species, 2008

Fishery	Months Fished	Peak Month	Peak Months Landings as a % of Fishery's Total Landings
Groundfish	May, July-September	July	74%
Snow Crab	July	July	100%
Other	May, October	May	78%

***What has been the trend for the commercial fisheries on the St Anns Bank AOI since 2002?***

There has been a significant decline in landings caught on the St Anns Bank AOI since earlier in the decade. The total landed value of all species caught on the St Anns Bank AOI declined from a high of \$1.2 million in 2003 to a 7 year low of approximately \$105,000 in 2008 (Figure 1). The decrease in total value was driven primarily by a

decline in Snow Crab landings which fell from a 7 year high of approximately \$934,000 in 2003 to \$45,000 in 2008. The groundfish fishery also experienced a significant decline, falling from a high of \$254,000 in 2004 to just under \$49,000 in 2008.

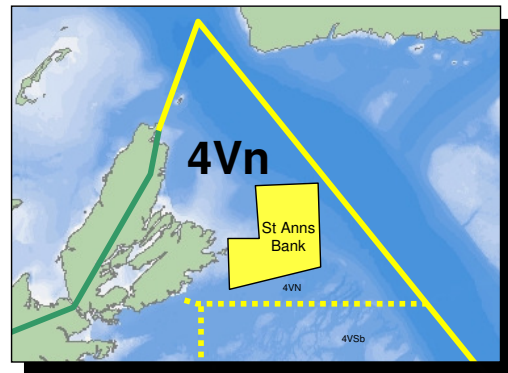


***What percentage of the total landed value of the NAFO unit areas does fishing on the St Anns Bank AOI generate?***

The St Anns Bank AOI is located in 4VN and only a small share of the area's landings were from the AOI.

The total landed value of all species caught in NAFO unit area 4VN and landed in the Maritimes Region was approximately \$33 million in 2008. Of this total, less than 0.5% was caught on the St Anns Bank AOI.

The percentage of Gulf Region's total landed value from 4VN which was in caught the AOI is not available at this time.



***How important are the species caught on the St Anns Bank AOI in a regional context?***

Landings from the St Anns Bank AOI contributed only a small share of Maritimes Region's total landed value and a negligible share of the Gulf Region's total landed value. In 2008, species caught on the St Anns Bank AOI and landed in the Maritimes Region contributed less than 0.1% to the total Maritimes Region landed value and less than 0.1% to total Maritimes Region landings.



***How many vessels actively fish on the St Anns Bank AOI?***

In 2008, there were 14 active vessels fishing on the St Anns Bank AOI. Just under 60% of all vessels fished groundfish species. The breakdown by species is summarized in Table 3.

Table 3 Number of Vessels by Primary Species, 2008

<b>Primary Species</b>	<b>Total</b>
Groundfish	8
Snow Crab	3
Other	3
<b>Total</b>	<b>14</b>

Note: Some vessels may fish more than one species. Primary species categorization is based on the species that contributed the most to the vessel's total landed value.

***How dependent are the active Maritimes Region vessels on catches from the St. Anns Bank AOI?***

Vessels that are active on the St Anns Bank AOI are typically not very dependent on the area for landings. Of the 14 active vessels fishing on the St Anns Bank AOI, 13 earned less than 25% of their total landed value from fishing in the area. The breakdown by dependency is summarized in Table 4.

Table 4 Vessel Dependency, 2008

<b>Dependency</b>	<b>Number of Vessels</b>
< 25%	13
25-50%	1
50-75%	0
>75%	0

***What gear types are used on the St Anns Bank AOI?***

In 2008, the most common gear types used by vessels fishing on the St Anns Bank AOI were longline and traps.

***What is the total estimated employment generated from fish harvesting in the St Anns Bank AOI?***

It is estimated that approximately 51 individuals worked on vessels fishing on the St Anns Bank AOI. Just under half of the total employed worked on vessels fishing groundfish. However, due to the seasonal nature of the fishing industry, this does not necessarily represent full-year or full-time employment. Estimated employment by primary species is summarized in Table 5.



Table 5 Estimated Employment by Species, 2008

Primary Species	# Vessels	Average Crew Size*	Total
Groundfish	8	3	24
Snow Crab	3	4	12
Other	3	5	15
<b>Total</b>	<b>14</b>		<b>51</b>

Note 1: Average crew size estimates are from Cost and Earnings Survey, Management Plans & other DFO sources.

Note 2: Total does not necessarily represent full-time/full-year employment.

In addition to the employment generated from fish harvesting in the St Anns Bank AOI there is also employment generated on shore due to related activities such as processing and transportation. Estimates of this additional employment are not available at this time.

### *How much crew income does fishing on the St Anns Bank AOI generate?*

Using a rough estimate of a crew share of 40% of landed value, it is estimated that for crew in 2008 the St Anns Bank AOI generated approximately \$42,000 in personal income. Employment in the groundfish fishery generated just under half of this income. The estimated income by primary species is summarized in Table 6.

Table 6 Estimated Crew Income by Species Category, 2008

Primary Species	Total Number Employed	Estimated Total Income (\$)
Groundfish	24	\$19,477
Snow Crab	12	\$18,041
Other	15	\$4,517
<b>Total</b>	<b>51</b>	<b>\$42,035</b>

Note: Actual crew share may vary by fishery.

### *How much First Nation's activity occurs on the St Anns Bank AOI?*

There are currently no First Nation vessels actively fishing on the St Anns Bank AOI nor are there any first nation's licence holders active in the area.

### *In what counties do the vessels land?*

In 2008, vessels reporting landings from the St Anns Bank AOI landed in 6 ports in the Maritimes Region and 1 port in the Gulf. In the Maritimes Region these ports were located in Cape Breton, Richmond and Victoria County, Nova Scotia. The Gulf Region port was located in Gloucester County, New Brunswick. Approximately 87% of the landed value from the St Anns Bank AOI was landed in Cape Breton County. County summaries are in Table 7.



Table 7 Summary by County, 2008

County	# Vessels	Value (\$)	Weight (Round kg)
Cape Breton	11	\$91,692	41,287
Other Counties*	3	\$13,394	10,255
<b>Total</b>	<b>14</b>	<b>\$105,086</b>	<b>51,542</b>

Note 1: There may be some double counting of vessels as some vessels land in more than one county.

Note 2: Other counties include Richmond (NS), Victoria (NS) and Gloucester (NB). Information is aggregated due to confidentiality.

***How important to the communities are landings from the St Anns Bank AOI?***

Landings from the St Anns Bank AOI represent only a very small share of each of the four counties' total landings. In Cape Breton County, which reported landing 87% of the total value from the St Anns Bank AOI in 2008, less than 0.2% of the county's total landed value was caught in the AOI. For each of the other counties that reported landings from the St Anns Bank AOI in 2008, less than 1% of their total landed value from all fisheries was caught in the AOI. Cape Breton County's dependency on the St Anns Bank AOI is summarized in Table 8.

Table 8 County Dependency, 2008

Nova Scotia County	Landed Value from St Anns Bank Fisheries	Total Landed Value from all Fisheries	% of Total Landed Value Caught on MBES
Cape Breton	\$91,692	\$55,350,132	0.17%

***How many processing plants are there in the communities in Nova Scotia reporting landings from the St Anns Bank AOI?***

Of the estimated 184 active processing plants in Nova Scotia, 17 were located in counties reporting landings from the St Anns Bank AOI. In Cape Breton County, which reported landing 87% of the total value from the St Anns Bank AOI in 2008, there were 7 active processing plants. Information for New Brunswick communities is not available at this time. The number of plants by county in Nova Scotia is summarized in Table 9.

Table 9 Number of Processing Plants by County, 2006

Nova Scotia County	Number of active plants
Cape Breton	7*
Richmond	5
Victoria	5
<b>Total</b>	<b>17</b>

Note: \* indicates where the highest landings occur

Number of active plants - source: Nova Scotia Seafood Processing Sector State of the Industry and Competitiveness Assessment, Gardner Pinfold (2007)

### ***How dependent are the communities in Nova Scotia on fish processing and fish harvesting?***

In Cape Breton County, where 87% of the total value from the St Anns Bank AOI was landed in 2008, less than 4% of the labour force was employed in the fishing and fish processing industry during 2005. Information for New Brunswick communities is not available at this time. The number of individuals employed in fishing and seafood processing by county for Nova Scotia is summarized in Table 10.

Table 10 Total Number Employed by County for Selected Industries during 2005

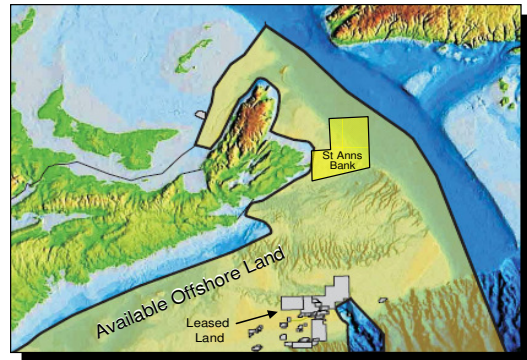
<b>Nova Scotia County</b>	<b>Total Experienced Labour Force 15 years and Older</b>	<b>Fishing</b>	<b>Seafood Product Preparation and Packaging</b>
Cape Breton (% of Total)	45,175 (100%)	970 (2.2%)	505 (1.1%)
Richmond (% of Total)	4,175 (100%)	175 (9.6%)	275 (5.1%)
Victoria (% of Total)	3,810 (100%)	590 (9.6%)	135 (5.1%)

Source: Statistics Canada, 2006 Census

### ***Is there any oil or gas activity currently operating on the St Anns Bank AOI?***

There are no oil or gas wells, pipelines or exploration licensing agreements currently in place on St Anns Bank.

The area is within the Nova Scotia Department of Energy's 'Available Offshore Lands' boundary.

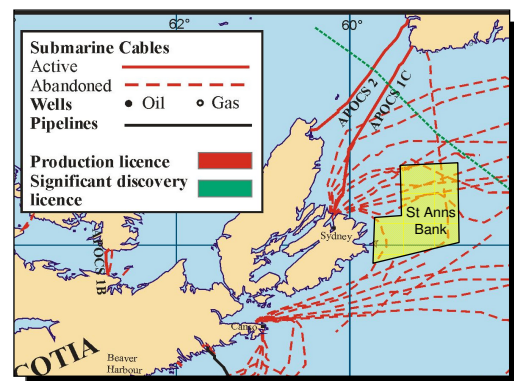


Source: <http://www.gov.ns.ca/energy/oil-gas/offshore/current-activity/>

### ***Are there any other oceans activities occurring on St Anns Bank?***

There are no active submarine communications cables within St Anns Bank however; there are a number of abandoned cables running through the area.

Other activities that may occur in the area include water transportation, ocean tourism and government services. Information on these potential activities is not available at this time.



Source: <http://www.acls-aatc.ca/>



## APPENDIX

Figure A1 Groundfish Landings and Landed Value, 2002-2008

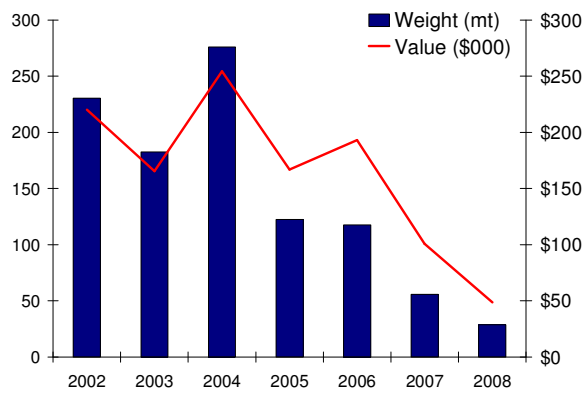


Figure A3 Other Landings and Landed Value, 2002-2008

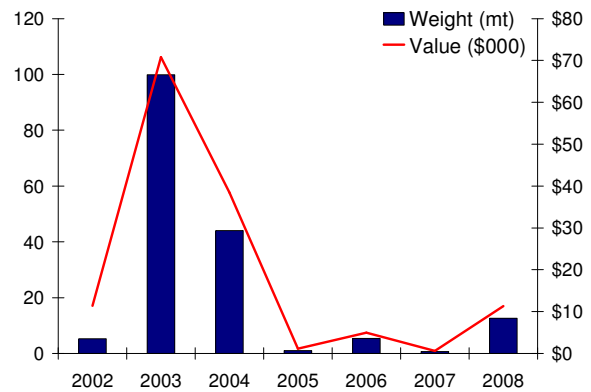
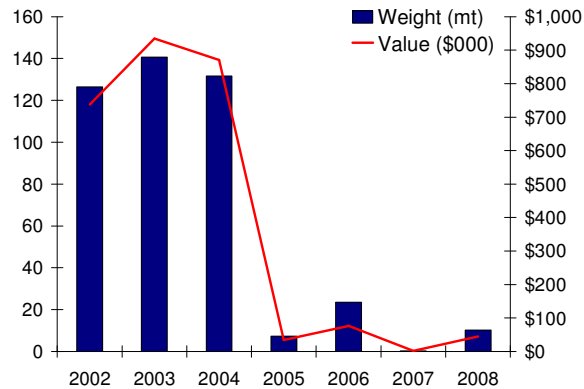


Figure A2 Snow Crab Landings and Landed Value, 2002-2008



### For more information, please contact:

Oceans and Coastal Management Division  
 Fisheries and Oceans Canada – Maritimes Region  
 Bedford Institute of Oceanography  
 PO Box 1006  
 Dartmouth, Nova Scotia  
 B2Y 4A2

Phone: 902-426-4215

Fax: 902-426- 3855

[MaritimesMPAs@dfo-mpo.gc.ca](mailto:MaritimesMPAs@dfo-mpo.gc.ca)